

The Family Tree

Genealogy and History

Preface

In 2006 I volunteered to consolidate numerous related family histories into a single digital composition. In my first foray into genealogy, I was successful in correlating the history of nearly 4,500 individuals from 4 separate books into one seamless piece of genealogy. I soon came to realize the significance of what I was doing and it's importance to the many relatives who shared a genuine interest in our ancestors.

Since the initial task in 2006, my interest and curiosity has resulted in extensive research to build upon the history to date as well as coordinating with other genealogists to expand upon the lineage of our family ancestors. To date, there are over 14,800 individuals who are in one form or another related within our family tree. This book comprises only a partial summary of our entire family. Additional books and the entire genealogy and history of our family can be viewed online at www.thefamilytree.net

This project was developed to actively share and build upon our family history. I encourage you to provide any information or knowledge you may have. Your help to establish and preserve the countless generations before us, paves the way for the education and enjoyment of the countless generations that will follow us.

Kristopher Clinton "KC" Gerlitz
kgerlitz@thefamilytree.net

Acknowledgement

This project is dedicated to the countless individuals who have preceded me. Their effort and dedication to the discovery of our ancestors has been crucial to the development of this body of work.

Special thanks to Sister Rose Kordick and Sister Mary Dorothy Kordick for not only their tremendous commitment and research, but most importantly; for their confidence to entrust me with a project so dear to their hearts. Thank you Dennis Day for the extensive history of the Minnihan ancestry. Thank you to Marion Simmons for providing history on the Gerlitz side, and to my mother, Jeannette Jacquelyn Schmit, for her perseverance and enthusiasm in researching our direct ancestors.

Without the cooperation of everyone involved, we would not be able to enjoy the history before us.

Table of Contents

Descendants of John BALCH	1
First Generation	1
Second Generation	1
Third Generation	1
Fourth Generation	1
Fifth Generation	1
Sixth Generation	1
Seventh Generation	1
Eighth Generation	2
Ninth Generation	2
Tenth Generation	3
Eleventh Generation	4
Twelfth Generation	8
Thirteenth Generation	11
Name Index	13

Descendants of John BALCH

First Generation

1. **John BALCH** died in 1648.

John married **Margary (UNKNOWN)**.

The child from this marriage was:

- + 2 M i. **Benjamin BALCH** was born in Salem, Essex, MA and died in 1715 in Beverly, Essex, MA.

Second Generation

2. **Benjamin BALCH** was born in Salem, Essex, MA and died in 1715 in Beverly, Essex, MA.

Benjamin married **Sarah GARDNER** in 1650. Sarah died on April 5, 1686.

The child from this marriage was:

- + 3 M i. **Benjamin BALCH** was born in 1653 and died in 1698 at age 45.

Third Generation

3. **Benjamin BALCH** was born in 1653 and died in 1698 at age 45.

Benjamin married **Elizabeth WOODBURY** in 1674.

The child from this marriage was:

- + 4 M i. **Joseph BALCH** was born on September 26, 1677 in Beverly, Essex, MA and died on August 14, 1712 at age 34.

Fourth Generation

4. **Joseph BALCH** was born on September 26, 1677 in Beverly, Essex, MA and died on August 14, 1712 at age 34.

Joseph married **Sarah HART** in 1697.

The child from this marriage was:

- + 5 M i. **Benjamin BALCH** died in 1753.

Fifth Generation

5. **Benjamin BALCH** died in 1753.

Benjamin married **Nazareth CUSHING** on September 8, 1726.

The child from this marriage was:

- + 6 M i. **Hart BALCH** was born in 1731 in Scituate, Plymouth, MA and died in 1751 at age 20.

Sixth Generation

6. **Hart BALCH** was born in 1731 in Scituate, Plymouth, MA and died in 1751 at age 20.

Hart married **Ms. BOURNE** in 1750.

The child from this marriage was:

- + 7 M i. **Hart BALCH** was born on November 9, 1751 in Newbury, Essex, MA and died on February 15, 1846 at age 94.

Seventh Generation

7. **Hart BALCH** was born on November 9, 1751 in Newbury, Essex, MA and died on February 15, 1846 at age 94.

Hart married **Priscilla HOLT** in 1772.

Descendants of John BALCH

The child from this marriage was:

+ 8 M i. **Joel BALCH** was born on February 6, 1774 and died on October 27, 1845 at age 71.

Eighth Generation

8. **Joel BALCH** was born on February 6, 1774 and died on October 27, 1845 at age 71.

Joel married **Betsey STEVENS**, daughter of **William STEVENS** and **Abigail GREEN**, on July 4, 1796. Betsey was born on April 30, 1778 and died on December 31, 1810 at age 32.

The child from this marriage was:

+ 9 F i. **Louisa Marium BALCH** was born on April 13, 1804 in Andover, Merrimack, NH and died on February 5, 1892 in Galesburg, Knox, IL at age 87.

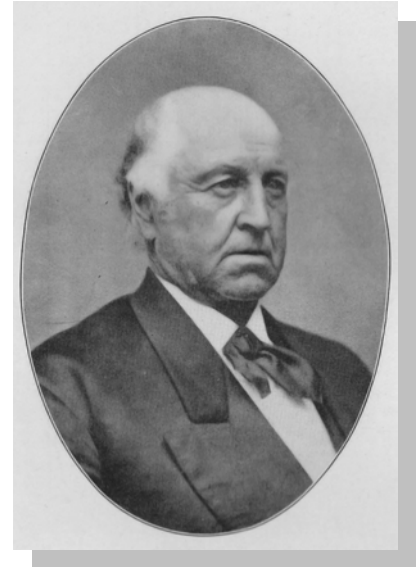
Ninth Generation

9. **Louisa Marium BALCH** was born on April 13, 1804 in Andover, Merrimack, NH and died on February 5, 1892 in Galesburg, Knox, IL at age 87.

Louisa married **John Lawson CLAY**, son of **Timothy CLAY** and **Rhonda LAWSON**, on March 8, 1827 in Chester, Rockingham, NH. John was born on October 3, 1802 in Chester, Windsor, VT and died on October 29, 1877 at age 75.

Children from this marriage were:

- + 10 M i. **Alonza Cardell CLAY** was born on February 19, 1828 in Chester, Windsor, VT and died on December 13, 1897 in Chester, Windsor, VT at age 69.
- + 11 M ii. **William Lawson CLAY** was born on August 29, 1831 in Chester, Windsor, VT and died on March 7, 1901 at age 69.
- + 12 F iii. **Eliza Louisa CLAY** was born on March 31, 1833 in Chester, Windsor, VT and died on January 24, 1835 in Chester, Windsor, VT at age 1.
- + 13 M iv. **Warren Winslow Wright CLAY** was born on June 12, 1835 in Chester, Windsor, VT and died on January 7, 1861 at age 25.
- + 14 M v. **Hiland Henry CLAY** was born on January 3, 1838 in Chester, Windsor, VT.

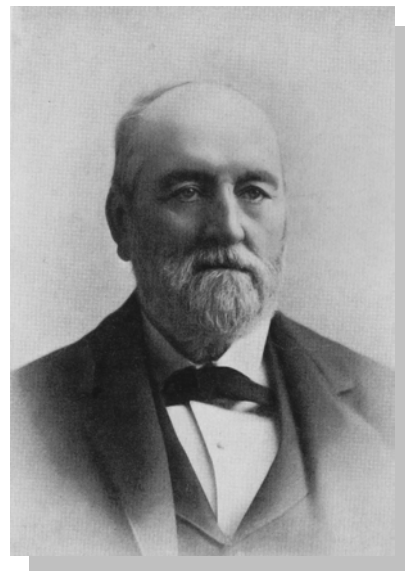


John Lawson Clay

Descendants of John BALCH

Tenth Generation

10. Alonza Cardell CLAY was born on February 19, 1828 in Chester, Windsor, VT and died on December 13, 1897 in Chester, Windsor, VT at age 69.



Alonza Cardell Clay

Alonza married **Lavina Mariam DERBY**, daughter of **Nathaniel DERBY** and **Betsey BALCH**, on August 15, 1854 in Knoxville, Knox, IL. Lavina was born on July 24, 1827 and died on February 12, 1899 in Galesburg, Knox, IL at age 71.

Children from this marriage were:

- + 15 M i. **John Cato CLAY** was born in 1855 in Galesburg, Knox, IL and died on May 3, 1861 at age 6.
- + 16 M ii. **Charles Clarence CLAY** was born on December 6, 1856 in Galesburg, Knox, IL and died on May 5, 1909 in Galesburg, Knox, IL at age 52.
- + 17 F iii. **Martha M. CLAY** was born on June 9, 1863 in Galesburg, Knox, IL.



Lavina Mariam Derby

11. William Lawson CLAY was born on August 29, 1831 in Chester, Windsor, VT and died on March 7, 1901 at age 69.

William married **Harriet A. DAVISON**, daughter of **Isaac DAVISON** and **Mary SMITH**, on November 22, 1854 in Knoxville, Knox, IL. Harriet died on February 3, 1865.

Children from this marriage were:

- + 18 M i. **Harold Timothy CLAY** was born on October 3, 1855 in Woodhull, Henry, IL and died on October 13, 1856 in Woodhull, Henry, IL at age 1.
- + 19 M ii. **Seth H. CLAY** was born on June 14, 1857 in Woodhull, Henry, IL.
- + 20 F iii. **Mary Louisa CLAY** was born on August 1, 1859 in Woodhull, Henry, IL.

William next married **Annie JOHNSON** on February 25, 1863 in Mt. Pleasant, Henry, IA. Annie was born on June 8, 1840 in Sweden.

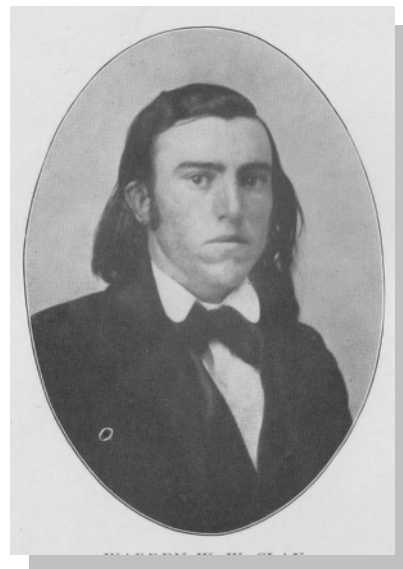
Descendants of John BALCH

Children from this marriage were:

- + 21 F i. **Fannie Mariah CLAY** was born on March 23, 1864 in Galesburg, Knox, IL.
- + 22 M ii. **Warren Lawson CLAY** was born on May 11, 1875 in Woodhull, Henry, IL.
- + 23 F iii. **Eugenia Marion CLAY** was born on December 30, 1879 in Woodhull, Henry, IL.

12. Eliza Louisa CLAY was born on March 31, 1833 in Chester, Windsor, VT and died on January 24, 1835 in Chester, Windsor, VT at age 1.

13. Warren Winslow Wright CLAY was born on June 12, 1835 in Chester, Windsor, VT and died on January 7, 1861 at age 25.



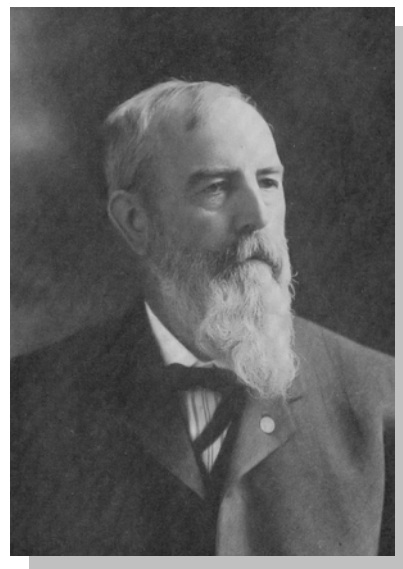
Warren Winslow Wright Clay

14. Hiland Henry CLAY was born on January 3, 1838 in Chester, Windsor, VT.

Hiland married **Jennie E. CLAY**, daughter of **James M. CLAY** and **Charlotte T. ORCUTT**, on October 14, 1878 in Gaysville, VT. Jennie was born on January 12, 1855 in Pittsford, Rutland, VT.

Children from this marriage were:

- + 24 M i. **Fred Scott CLAY** was born on July 21, 1879 in Galesburg, Knox, IL.
- + 25 F ii. **Emma Frances CLAY** was born on June 22, 1880 in Galesburg, Knox, IL.
- + 26 M iii. **John Lawson II CLAY** was born on June 1, 1882 in Galesburg, Knox, IL.
- + 27 M iv. **Walter Timothy CLAY** was born on April 26, 1884 in Galesburg, Knox, IL.
- + 28 M v. **Irving Hiland Henry CLAY** was born on May 31, 1889 in Galesburg, Knox, IL.
- + 29 F vi. **Edna Noble CLAY** was born on December 3, 1890 in Galesburg, Knox, IL.
- + 30 M vii. **William Balch CLAY** was born on April 27, 1892 in Galesburg, Knox, IL and died on February 8, 1893 in Galesburg, Knox, IL.
- + 31 F viii. **Marion Louisa CLAY** was born on November 11, 1893 in Galesburg, Knox, IL.
- + 32 M ix. **Robert Madison CLAY** was born on March 7, 1896 in Galesburg, Knox, IL.



Hiland Harry Clay

Eleventh Generation

15. John Cato CLAY was born in 1855 in Galesburg, Knox, IL and died on May 3, 1861 at age 6.

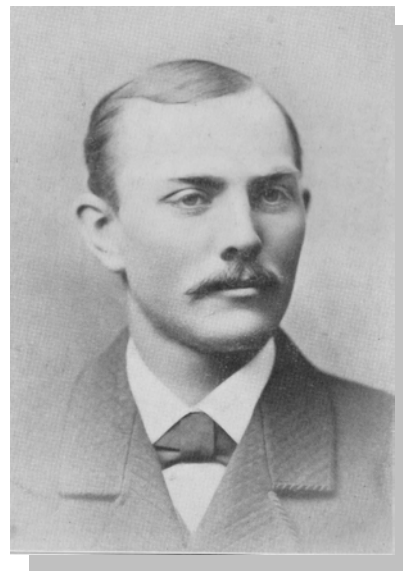
Descendants of John BALCH

16. Charles Clarence CLAY was born on December 6, 1856 in Galesburg, Knox, IL and died on May 5, 1909 in Galesburg, Knox, IL at age 52.

Charles married **Mary C. HODGE**, daughter of **William HODGE** and **Elizabeth (UNKNOWN)**, on March 24, 1880. Mary was born on September 12, 1857 in Galesburg, Knox, IL.

Children from this marriage were:

- + 33 F i. **Louisa Marium CLAY** was born on February 21, 1883 in Unknown, Warren, IL.
- + 34 M ii. **Alonza William CLAY** was born on October 17, 1885 in Unknown, Warren, IL.



Charles Clarence Clay

17. Martha M. CLAY was born on June 9, 1863 in Galesburg, Knox, IL.



Martha M. Clay

Descendants of John BALCH

Martha married **Samuel Vinton STUCKEY**, son of **John A. STUCKEY** and **Margaret NORRIS**, in Elgin, Kane, IL. Samuel was born on September 6, 1865 in Altona, Knox, IL.



Samuel Vinton Stuckey

18. Harold Timothy CLAY was born on October 3, 1855 in Woodhull, Henry, IL and died on October 13, 1856 in Woodhull, Henry, IL at age 1.

19. Seth H. CLAY was born on June 14, 1857 in Woodhull, Henry, IL.

Seth married **Margaret PATTERSON**, daughter of **Robert PATTERSON** and **Margaret KELLENBACK**, on January 4, 1881 in Galesburg, Knox, IL.

Children from this marriage were:

- + 35 M i. **(son) CLAY** was born on August 7, 1883 in Galesburg, Knox, IL and died on August 7, 1883 in Galesburg, Knox, IL.
- + 36 F ii. **Harriet Margaret CLAY** was born on September 20, 1884 in Galesburg, Knox, IL.
- + 37 M iii. **James Earl CLAY** was born on January 7, 1886 in Peoria, Peoria, IL.
- + 38 M iv. **Roger Williams CLAY** was born on February 5, 1889 in Peoria, Peoria, IL.

20. Mary Louisa CLAY was born on August 1, 1859 in Woodhull, Henry, IL.

Mary married **Edward J. RICHARDS**, son of **Henry RICHARDS** and **Mary PHELAN**, on March 8, 1884 in Galesburg, Knox, IL. Edward was born on December 25, 1860 in Galesburg, Knox, IL.

Children from this marriage were:

- + 39 M i. **Clarence Irving RICHARDS** was born on April 14, 1885 in Woodhull, Henry, IL.
- + 40 F ii. **Winnie Louise RICHARDS** was born on May 24, 1886 in Woodhull, Henry, IL and died on November 14, 1886 in Woodhull, Henry, IL.
- + 41 F iii. **Louisa Marium RICHARDS** was born on October 23, 1887 in Woodhull, Henry, IL.
- + 42 M iv. **Harry Willis RICHARDS** was born on June 17, 1889 in Woodhull, Henry, IL.
- + 43 M v. **Stanley Hiland RICHARDS** was born on September 15, 1890 in Woodhull, Henry, IL.
- + 44 M vi. **William Clay RICHARDS** was born on January 20, 1892 in Woodhull, Henry, IL.
- + 45 F vii. **Olive Irene RICHARDS** was born on March 11, 1893 in Woodhull, Henry, IL.
- + 46 F viii. **Edna Daisy RICHARDS** was born on August 12, 1894 in Woodhull, Henry, IL.
- + 47 F ix. **Harriet Amelia RICHARDS** was born on March 14, 1896 in Woodhull, Henry, IL and died on March 16, 1896 in Woodhull, Henry, IL.
- + 48 F x. **Eugenia Julia RICHARDS** was born on May 26, 1897 in Woodhull, Henry, IL.
- + 49 F xi. **Alice Iola RICHARDS** was born on July 24, 1899 in Woodhull, Henry, IL.
- + 50 F xii. **Elsie Loraine RICHARDS** was born on November 26, 1900 in Woodhull, Henry, IL.
- + 51 F xiii. **Alva E. RICHARDS** was born on October 17, 1903 in Woodhull, Henry, IL and died on March 27, 1904 in Woodhull, Henry, IL.

21. Fannie Mariah CLAY was born on March 23, 1864 in Galesburg, Knox, IL.

Fannie married **Horace Mann WILLSIE**, son of **Col. H.H. WILLSIE** and **Betsey NICHOLS**, on November 14, 1887 in Galesburg, Knox, IL. Horace was born on May 1, 1859 in Galesburg, Knox, IL.

Descendants of John BALCH

Children from this marriage were:

- + 52 F i. **Grace Eugenie WILLSIE** was born on December 5, 1890 in Galesburg, Knox, IL.
- + 53 M ii. **LeRoy Clay WILLSIE** was born on January 31, 1895 in Galesburg, Knox, IL.

22. **Warren Lawson CLAY** was born on May 11, 1875 in Woodhull, Henry, IL.

23. **Eugenia Marion CLAY** was born on December 30, 1879 in Woodhull, Henry, IL.

Eugenia married **Frank WELCH**, son of **Tom WELCH** and **Mary KEARNEY**, on February 14, 1889 in Galva, Henry, IL. Frank was born on November 12, 1875 in Rio, Knox, IL.

Children from this marriage were:

- + 54 F i. **Hazel Colette WELCH** was born on July 24, 1900 in Woodhull, Henry, IL.
- + 55 M ii. **Donald Francis WELCH** was born on January 16, 1904 in Woodhull, Henry, IL.
- + 56 F iii. **Patricia Loraine WELCH** was born on April 3, 1910 in Woodhull, Henry, IL.

24. **Fred Scott CLAY** was born on July 21, 1879 in Galesburg, Knox, IL.

Fred married **Elsie SMITH** on January 12, 1900 in Monmouth, Warren, IL. Elsie was born on July 28, 1879 and died on February 8, 1912 in Stavely, Alberta, Canada at age 32.

Children from this marriage were:

- + 57 F i. **Ethel Grace CLAY** was born on May 17, 1901 in Galesburg, Knox, IL.
- + 58 M ii. **Arnie James CLAY** was born on December 25, 1903 in Galesburg, Knox, IL.
- + 59 M iii. **Everett Wesley CLAY** was born on June 26, 1906 in Galesburg, Knox, IL.
- + 60 F iv. **Katherine Belle CLAY** was born on December 25, 1908 in Galesburg, Knox, IL.

25. **Emma Frances CLAY** was born on June 22, 1880 in Galesburg, Knox, IL.

Emma married **Charles GARDNER**, son of **William GARDNER** and **Mary HENNON**, on December 23, 1907. Charles was born on August 18, 1877 in Coldbrook, Warren, IL.

26. **John Lawson II CLAY** was born on June 1, 1882 in Galesburg, Knox, IL.

John married **Elsie Conway HOUSE**, daughter of **Henry HOUSE** and **Mary MOORE**, on December 26, 1906 in Greenwich, VA. Elsie was born on September 25, 1884 in Greenwich, VA.

Children from this marriage were:

- + 61 M i. **John Lawson III CLAY** was born on October 24, 1908 in Wapello, Louisa, IA.
- + 62 F ii. **Evelyn Carroll CLAY** was born on January 21, 1911 in Wapello, Louisa, IA.



John Lawson Clay II

27. **Walter Timothy CLAY** was born on April 26, 1884 in Galesburg, Knox, IL.

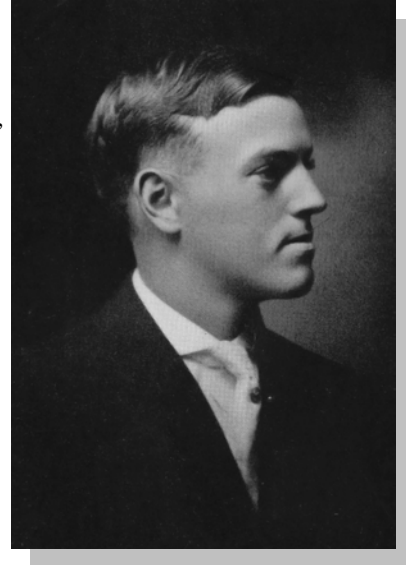
Descendants of John BALCH

28. **Irving Hiland Henry CLAY** was born on May 31, 1889 in Galesburg, Knox, IL.

Irving married **Helen Agnes MANN**, daughter of **John N. MANN** and **Mary HAYES**, on August 5, 1912 in Galesburg, Knox, IL. Helen was born on August 5, 1890 in Galesburg, Knox, IL.

The child from this marriage was:

- + 63 M i. **Hiland Henry CLAY** was born on May 29, 1915 in Galesburg, Knox, IL.



Irving Hiland Henry Clay

29. **Edna Noble CLAY** was born on December 3, 1890 in Galesburg, Knox, IL.

Edna married **Harry R. TERPENING**, son of **Edwin TERPENING** and **Cynthia ADCOCK**, on October 9, 1912 in Galesburg, Knox, IL. Harry was born on January 19, 1891 in Coldbrook, Warren, IL.

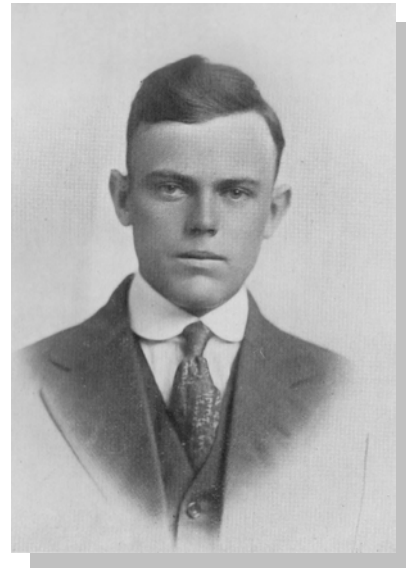
Children from this marriage were:

- + 64 M i. **Robert Joseph TERPENING** was born on June 30, 1914 in Galesburg, Knox, IL.
- + 65 M ii. **Donald Clay TERPENING** was born on April 18, 1916 in Galesburg, Knox, IL.

30. **William Balch CLAY** was born on April 27, 1892 in Galesburg, Knox, IL and died on February 8, 1893 in Galesburg, Knox, IL.

31. **Marion Louisa CLAY** was born on November 11, 1893 in Galesburg, Knox, IL.

32. **Robert Madison CLAY** was born on March 7, 1896 in Galesburg, Knox, IL.



Robert Madison Clay

Twelfth Generation

Descendants of John BALCH

33. **Louisa Marium CLAY** was born on February 21, 1883 in Unknown, Warren, IL.

Louisa married **Cornelius Aaron SMITH** on February 21, 1900. Cornelius was born on December 25, 1881.

Children from this marriage were:

- + 66 F i. **Eva Marie SMITH** was born on June 10, 1901 in Galesburg, Knox, IL.
- + 67 M ii. **Harold Laverne SMITH** was born on March 4, 1905 in Galesburg, Knox, IL.
- + 68 M iii. **Charles Wesley SMITH** was born on March 17, 1907 in Galesburg, Knox, IL.
- + 69 M iv. **Harry Clay SMITH** was born on December 4, 1908 in Galesburg, Knox, IL.
- + 70 F v. **Martha Elizabeth SMITH** was born on November 24, 1911 in Galesburg, Knox, IL.

34. **Alonza William CLAY** was born on October 17, 1885 in Unknown, Warren, IL.

Alonza married **Cathryn Isabel FORREY**, daughter of **Ostrando DEGRAFFE** and **Lucinda Ann HUGHEY**, on December 14, 1908 in Galesburg, Knox, IL. Cathryn was born on October 16, 1883 in Blanchard, Page, IA.

Children from this marriage were:

- + 71 M i. **Charles Samuel CLAY** was born on May 7, 1911 in Galesburg, Knox, IL.
- + 72 M ii. **Alonza William CLAY** was born on March 11, 1916 in Galesburg, Knox, IL.



Alonza William Clay

35. (son) **CLAY** was born on August 7, 1883 in Galesburg, Knox, IL and died on August 7, 1883 in Galesburg, Knox, IL.

36. **Harriet Margaret CLAY** was born on September 20, 1884 in Galesburg, Knox, IL.

Harriet married **Erastus Barlow ELIOTT**, son of **George M. ELIOTT** and **Mary Jane CUMMINGS**, on February 28, 1911 in Bassett, Rock, NE. Erastus was born on April 28, 1883 in Ocheyedon, Osceola, IA.

Children from this marriage were:

- + 73 M i. **Frances ELIOTT** was born on December 26, 1912 in Long Pine, Brown, NE.
- + 74 M ii. **Eugene Allen ELIOTT** was born on May 8, 1914 in Long Pine, Brown, NE.
- + 75 F iii. **Margaret Katherine ELIOTT** was born on June 14, 1916 in Long Pine, Brown, NE and died on July 6, 1916 in Long Pine, Brown, NE.

37. **James Earl CLAY** was born on January 7, 1886 in Peoria, Peoria, IL.

James married **Janet Elizabeth WALLACE**, daughter of **Thomas WALLACE** and **Martha MIDDLETON**, on February 20, 1908 in Omaha, Douglas, NE. Janet was born on April 29, 1888 in Sanford, Ontario, Canada.

Children from this marriage were:

- + 76 M i. (son) **CLAY** was born on December 7, 1908 in Omaha, Douglas, NE and died on December 7, 1908 in Omaha, Douglas, NE.
- + 77 F ii. **Marjorie Elizabeth CLAY** was born on July 2, 1911 in Omaha, Douglas, NE.
- + 78 M iii. **Russel Earl CLAY** was born on January 29, 1913 in Omaha, Douglas, NE.
- + 79 M iv. **Wilfred CLAY** was born on July 10, 1914 in Omaha, Douglas, NE and died on December 21, 1914 in Omaha, Douglas, NE.
- + 80 F v. **Harriet Ellen CLAY** was born on September 21, 1915 in Omaha, Douglas, NE.

38. **Roger Williams CLAY** was born on February 5, 1889 in Peoria, Peoria, IL.

Roger married **Esther Nettie DUNHAM**, daughter of **Fred DUNHAM** and **Augusta NEWMANN**, on February 23, 1913 in Avoca, Pottawattamie, IA. Esther was born on May 18, 1894 in Avoca, Pottawattamie, IA.

Descendants of John BALCH

The child from this marriage was:

+ 81 F i. **Rogerina Wilhelmina CLAY** was born on December 24, 1914 in Shenandoah, Fremont, IA.

39. **Clarence Irving RICHARDS** was born on April 14, 1885 in Woodhull, Henry, IL.

40. **Winnie Louise RICHARDS** was born on May 24, 1886 in Woodhull, Henry, IL and died on November 14, 1886 in Woodhull, Henry, IL.

41. **Louisa Marium RICHARDS** was born on October 23, 1887 in Woodhull, Henry, IL.

Louisa married **Ray SMITH**, son of **Francis M. SMITH** and **Eurana (UNKNOWN)**, on February 15, 1911. Ray was born on April 29, 1885 in Crawfordsville, Washington, IA.

42. **Harry Willis RICHARDS** was born on June 17, 1889 in Woodhull, Henry, IL.

Harry married **Ruth FRANKLIN**, daughter of **E.B. FRANKLIN** and **Susie (UNKNOWN)**, on December 25, 1912. Ruth was born in May 1894 in Crawfordsville, Washington, IA.

The child from this marriage was:

+ 82 M i. **Willie T. RICHARDS** was born on January 30, 1914 in Ainsworth, Washington, IA.

43. **Stanley Hiland RICHARDS** was born on September 15, 1890 in Woodhull, Henry, IL.

44. **William Clay RICHARDS** was born on January 20, 1892 in Woodhull, Henry, IL.

William married **Nellie SMITH**, daughter of **Francis M. SMITH** and **Eurana (UNKNOWN)**, on October 4, 1912. Nellie was born on April 5, 1891.

45. **Olive Irene RICHARDS** was born on March 11, 1893 in Woodhull, Henry, IL.

46. **Edna Daisy RICHARDS** was born on August 12, 1894 in Woodhull, Henry, IL.

Edna married **Fred FRANKLIN**, son of **E.B. FRANKLIN** and **Susie (UNKNOWN)**, on February 12, 1913. Fred was born in November 1892 in Crawfordsville, Washington, IA.

Children from this marriage were:

+ 83 M i. **Donald FRANKLIN** was born on June 6, 1915 in Crawfordsville, Washington, IA.

+ 84 F ii. **Daisy FRANKLIN** was born on June 6, 1915 in Crawfordsville, Washington, IA.

47. **Harriet Amelia RICHARDS** was born on March 14, 1896 in Woodhull, Henry, IL and died on March 16, 1896 in Woodhull, Henry, IL.

48. **Eugenia Julia RICHARDS** was born on May 26, 1897 in Woodhull, Henry, IL.

49. **Alice Iola RICHARDS** was born on July 24, 1899 in Woodhull, Henry, IL.

50. **Elsie Loraine RICHARDS** was born on November 26, 1900 in Woodhull, Henry, IL.

51. **Alva E. RICHARDS** was born on October 17, 1903 in Woodhull, Henry, IL and died on March 27, 1904 in Woodhull, Henry, IL.

52. **Grace Eugenie WILLSIE** was born on December 5, 1890 in Galesburg, Knox, IL.

Grace married **Albert J. SWANSON**, son of **Frank SWANSON** and **Helma (UNKNOWN)**, on March 18, 1912 in Kewanee, Henry, IL. Albert was born on January 8, 1886 in Woodhull, Henry, IL.

The child from this marriage was:

+ 85 F i. **Grace Maxine SWANSON** was born on January 24, 1913 in Woodhull, Henry, IL.

53. **LeRoy Clay WILLSIE** was born on January 31, 1895 in Galesburg, Knox, IL.

54. **Hazel Colette WELCH** was born on July 24, 1900 in Woodhull, Henry, IL.

55. **Donald Francis WELCH** was born on January 16, 1904 in Woodhull, Henry, IL.

Descendants of John BALCH

- 56. **Patricia Loraine WELCH** was born on April 3, 1910 in Woodhull, Henry, IL.
- 57. **Ethel Grace CLAY** was born on May 17, 1901 in Galesburg, Knox, IL.
- 58. **Arnie James CLAY** was born on December 25, 1903 in Galesburg, Knox, IL.
- 59. **Everett Wesley CLAY** was born on June 26, 1906 in Galesburg, Knox, IL.
- 60. **Katherine Belle CLAY** was born on December 25, 1908 in Galesburg, Knox, IL.
- 61. **John Lawson III CLAY** was born on October 24, 1908 in Wapello, Louisa, IA.
- 62. **Evelyn Carroll CLAY** was born on January 21, 1911 in Wapello, Louisa, IA.
- 63. **Hiland Henry CLAY** was born on May 29, 1915 in Galesburg, Knox, IL.
- 64. **Robert Joseph TERPENING** was born on June 30, 1914 in Galesburg, Knox, IL.
- 65. **Donald Clay TERPENING** was born on April 18, 1916 in Galesburg, Knox, IL.

Thirteenth Generation

- 66. **Eva Marie SMITH** was born on June 10, 1901 in Galesburg, Knox, IL.
- 67. **Harold Laverne SMITH** was born on March 4, 1905 in Galesburg, Knox, IL.
- 68. **Charles Wesley SMITH** was born on March 17, 1907 in Galesburg, Knox, IL.
- 69. **Harry Clay SMITH** was born on December 4, 1908 in Galesburg, Knox, IL.
- 70. **Martha Elizabeth SMITH** was born on November 24, 1911 in Galesburg, Knox, IL.
- 71. **Charles Samuel CLAY** was born on May 7, 1911 in Galesburg, Knox, IL.
- 72. **Alonza William CLAY** was born on March 11, 1916 in Galesburg, Knox, IL.
- 73. **Frances ELIOTT** was born on December 26, 1912 in Long Pine, Brown, NE.
- 74. **Eugene Allen ELIOTT** was born on May 8, 1914 in Long Pine, Brown, NE.
- 75. **Margaret Katherine ELIOTT** was born on June 14, 1916 in Long Pine, Brown, NE and died on July 6, 1916 in Long Pine, Brown, NE.
- 76. **(son) CLAY** was born on December 7, 1908 in Omaha, Douglas, NE and died on December 7, 1908 in Omaha, Douglas, NE.
- 77. **Marjorie Elizabeth CLAY** was born on July 2, 1911 in Omaha, Douglas, NE.
- 78. **Russel Earl CLAY** was born on January 29, 1913 in Omaha, Douglas, NE.
- 79. **Wilfred CLAY** was born on July 10, 1914 in Omaha, Douglas, NE and died on December 21, 1914 in Omaha, Douglas, NE.
- 80. **Harriet Ellen CLAY** was born on September 21, 1915 in Omaha, Douglas, NE.
- 81. **Rogerina Wilhelmina CLAY** was born on December 24, 1914 in Shenandoah, Fremont, IA.
- 82. **Willie T. RICHARDS** was born on January 30, 1914 in Ainsworth, Washington, IA.
- 83. **Donald FRANKLIN** was born on June 6, 1915 in Crawfordsville, Washington, IA.

Descendants of John BALCH

84. **Daisy FRANKLIN** was born on June 6, 1915 in Crawfordsville, Washington, IA.

85. **Grace Maxine SWANSON** was born on January 24, 1913 in Woodhull, Henry, IL.

Name Index

(UNKNOWN)

Elizabeth, 5
Eurana, 10
Helma, 10
Margary, 1
Susie, 10

ADCOCK

Cynthia, 8

BALCH

Benjamin, 1
Betsey, 3
Hart, 1
Joel, 2
John, 1
Joseph, 1
Louisa Marium, 2

BOURNE

Ms., 1

CLAY

(son), 6, 9, 11
Alonza Cardell, 2, 3
Alonza William, 5, 9, 11
Arnie James, 7, 11
Charles Clarence, 3, 5
Charles Samuel, 9, 11
Edna Noble, 4, 8
Eliza Louisa, 2, 4
Emma Frances, 4, 7
Ethel Grace, 7, 11
Eugenia Marion, 4, 7
Evelyn Carroll, 7, 11
Everett Wesley, 7, 11
Fannie Mariah, 4, 6
Fred Scott, 4, 7
Harold Timothy, 3, 6
Harriet Ellen, 9, 11
Harriet Margaret, 6, 9
Hiland Henry, 2, 4, 8, 11
Irving Hiland Henry, 4, 8
James Earl, 6, 9
James M., 4
Jennie E., 4
John Cato, 3, 4
John Lawson, 2
John Lawson II, 4, 7
John Lawson III, 7, 11
Katherine Belle, 7, 11
Louisa Marium, 5, 9
Marion Louisa, 4, 8
Marjorie Elizabeth, 9, 11
Martha M., 3, 5
Mary Louisa, 3, 6

CLAY

Robert Madison, 4, 8
Roger Williams, 6, 9
Rogerina Wilhelmina, 10, 11
Russel Earl, 9, 11
Seth H., 3, 6
Timothy, 2
Walter Timothy, 4, 7
Warren Lawson, 4, 7
Warren Winslow Wright, 2, 4
Wilfred, 9, 11
William Balch, 4, 8
William Lawson, 2, 3

CUMMINGS

Mary Jane, 9

CUSHING

Nazareth, 1

DAVISON

Harriet A., 3
Isaac, 3

DEGRAFFE

Ostrando, 9

DERBY

Lavina Mariam, 3
Nathaniel, 3

DUNHAM

Esther Nettie, 9
Fred, 9

ELIOTT

Erastus Barlow, 9
Eugene Allen, 9, 11
Frances, 9, 11
George M., 9
Margaret Katherine, 9, 11

FORREY

Cathryn Isabel, 9

FRANKLIN

Daisy, 10, 12
Donald, 10, 11
E.B., 10
Fred, 10
Ruth, 10

GARDNER

Charles, 7
Sarah, 1
William, 7

GREEN

Abigail, 2

HART

Sarah, 1

HAYES

Mary, 8

HENNON

Mary, 7

HODGE

Mary C., 5
William, 5

HOLT

Priscilla, 1

HOUSE

Elsie Conway, 7
Henry, 7

HUGHEY

Lucinda Ann, 9

JOHNSON

Annie, 3

KEARNEY

Mary, 7

KELLENBACK

Margaret, 6

LAWSON

Rhonda, 2

MANN

Helen Agnes, 8
John N., 8

MIDDLETON

Martha, 9

MOORE

Mary, 7

NEWMANN

Augusta, 9

NICHOLS

Betsey, 6

NORRIS

Margaret, 5

ORCUTT

Charlotte T., 4

PATTERSON

Margaret, 6
Robert, 6

PHELAN

Mary, 6

RICHARDS

Alice Iola, 6, 10
Alva E., 6, 10
Clarence Irving, 6, 10
Edna Daisy, 6, 10
Edward J., 6
Elsie Loraine, 6, 10
Eugenia Julia, 6, 10
Harriet Amelia, 6, 10
Harry Willis, 6, 10
Henry, 6
Louisa Marium, 6, 10

Name Index

RICHARDS

Olive Irene, 6, 10
Stanley Hiland, 6, 10
William Clay, 6, 10
Willie T., 10, 11
Winnie Louise, 6, 10

SMITH

Charles Wesley, 9, 11
Cornelius Aaron, 9
Elsie, 7
Eva Marie, 9, 11
Francis M., 10
Harold Laverne, 9, 11
Harry Clay, 9, 11
Martha Elizabeth, 9, 11
Mary, 3
Nellie, 10
Ray, 10

STEVENS

Betsey, 2
William, 2

STUCKEY

John A., 5
Samuel Vinton, 5

SWANSON

Albert J., 10
Frank, 10
Grace Maxine, 10, 12

TERPENING

Donald Clay, 8, 11
Edwin, 8
Harry R., 8
Robert Joseph, 8, 11

WALLACE

Janet Elizabeth, 9
Thomas, 9

WELCH

Donald Francis, 7, 10
Frank, 7
Hazel Colette, 7, 10
Patricia Loraine, 7, 11
Tom, 7

WILLSIE

Col. H.H., 6
Grace Eugenie, 7, 10
Horace Mann, 6
LeRoy Clay, 7, 10

WOODBURY

Elizabeth, 1

